

CANTILEVER RACKING

Information Sheet

PRODUCT

Cantilever racking is a system specifically designed for the safe and organised storage of long and heavy loads. Our cantilever systems are an effective and efficient alternative to conventional lighter weight storage solutions.



FEATURES

Manufactured within the UK, our system features:

- A robust design with all uprights and bases manufactured from heavy duty universal beam sections.
- Individual structural calculations to ensure that the most cost effective solution is provided.
- Options for single or double sided units with a wide range of painted or galvanised finish.
- A wide range of accessories.
- Vertical arm adjustment on 150mm centres as standard.

BENEFITS

We can supply:

- Arm lengths and capacities to suit your requirements.
- Rack heights up to 12m to carry up to 30 tonnes.
- An open fronted system providing the ability to store infinite and varying length items.



DESIGN

All products comply with current British Standards:

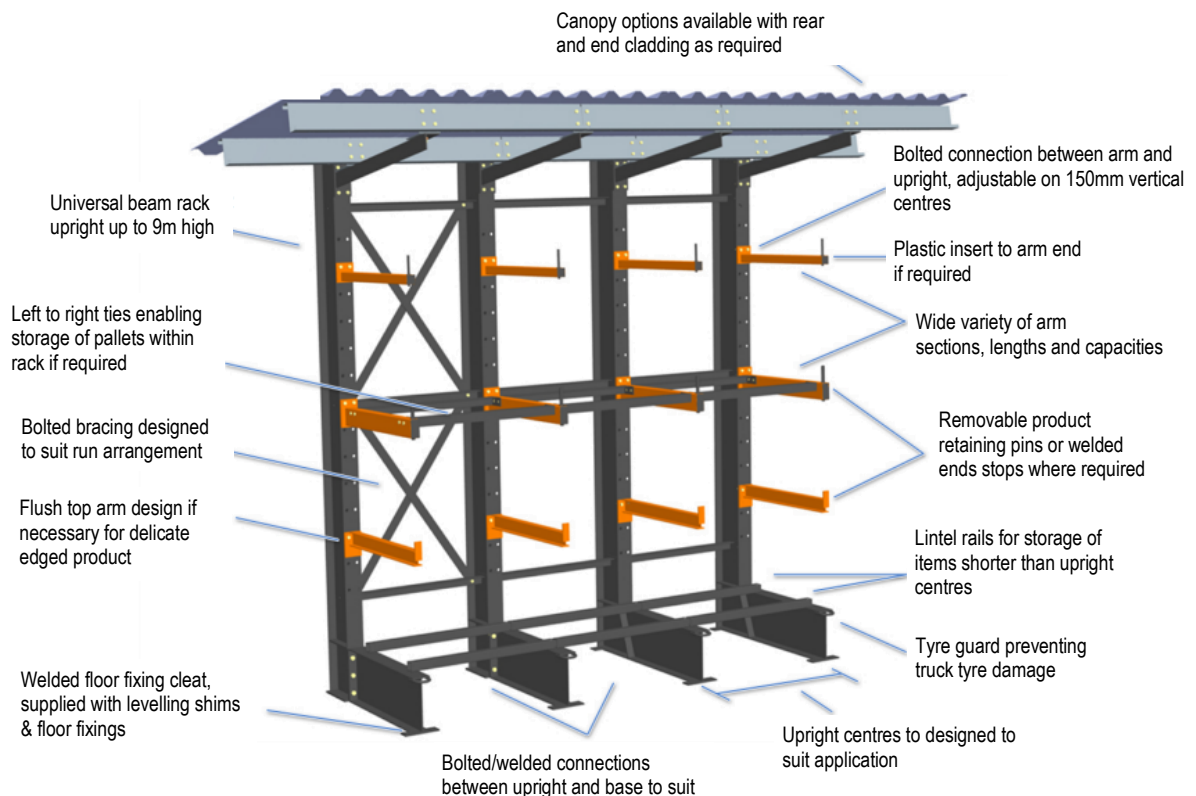
- Minimum Safety Factor of 2.5 based on ultimate tensile strength.
- Arm deflection limited to 1/180th of length.
- Upright deflection limited to 1/120 of height or 50mm, whichever is less.
- Maximum allowable weld stress of 115N/mm²

APPLICATIONS

- Aluminium sheet and plate
- Heavy pipes or tubes
- Timber packs
- Scrap vehicles
- Panels
- Steel Sections: plate or sheet
- Raw materials
- Worktops & laminates
- Concrete & sheet lintels

CANOPIES & CLADDING

We also produce Cantilever Racking fitted with canopies and rainwater goods that will protect your externally stored products from weather damage. In addition to roofs, we offer a complete Rack Clad Building package, a very cost-effective way of constructing a stand-alone storage building.



EXTRAS

RETAINING PINS

Standard Retaining Pins (100mm high)
Heavy Duty Retaining Pins (100mm high)
Heavy Duty Retaining Pins (300mm high)

! If arm from box section, arm is drilled to take a retaining pin. If arm from I-beam, pin slots into welded arm pocket.



TYRE GUARDS

Tyre guards protect racking from forklift damage.
1x tyre guard is required per base, if specified.

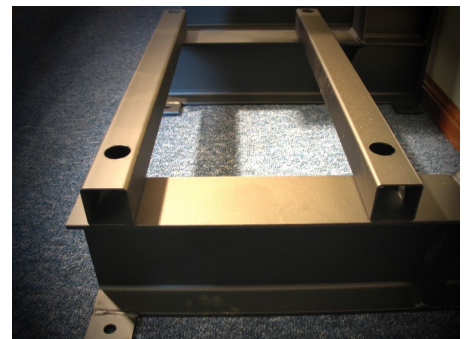
! Standard tyre guard will not fit onto base narrower than 152 I-beam section.



LINTELS/BASE RAILS

Lintel rails are most commonly used on the base level of a cantilever rack and are often referred to as base rails.

! A rack that has a length of up to 1200mm will usually require 2 rails.



DECKING

Arm ties and decking might be required to store various length products on the same rack.

Options of timber or mesh decking are available.

