

SAFETY BARRIERS

Information Sheet

PRODUCT

Barrier systems designed for the protection of people, warehouse equipment and stock.



FEATURES

- Finished in high-visibility Orange (RAL 2011) as standard; Yellow (RAL 1003) finish available on request.
- Galvanised finish available for external applications.
- Modular construction enables easy extension or quick replacement of damaged components.
- Supplied with floor fixings for convenient installation.



DESIGN

- Standard heights ranging from 450 to 1100mm.
- Bespoke barrier lengths to suit customers' individual requirements.
- Non-standard heights and finishes available on request.

OPTIONS

REP 100 – TWIN CHANNEL BARRIER

- Height: 750mm or 1100mm .
- Individual barrier length: up to 2500mm.
- Longer barrier runs will have posts located at every 1900mm .



REP 100H – TWIN CHANNEL BARRIER WITH PEDESTRIAN HANDRAIL

- Height: 1100mm.
- Individual barrier length: up to 2500mm.
- Longer barrier runs will have posts located at every 1900mm.



PEDESTRIAN BARRIER

- Lightweight pedestrian barrier.
- Height: 1100mm.
- Individual barrier length: up to 2500mm.
- Longer barrier runs will have posts located at every 1900mm.



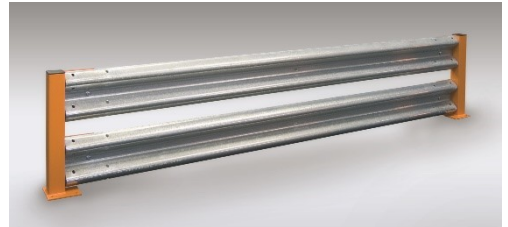
REP 101 – SINGLE ARMCO BARRIER

- Height: 600mm or 750mm.
- Individual barrier length up to 2500mm.
- Longer barrier runs will have posts located at every 1600mm.



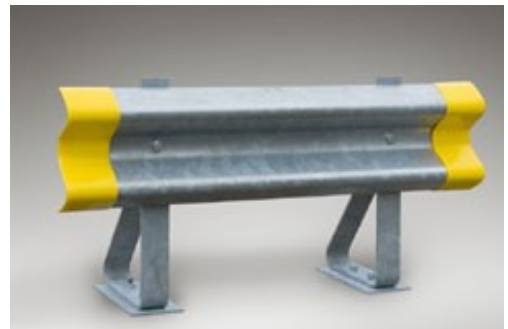
REP 101D – DOUBLE ARMCO BARRIER

- Height: 750mm or 1100mm.
- Individual barrier length up to 2500mm.
- Longer barrier runs will have posts located at every 1600mm .



REP 101S – SPRUNG POST ARMCO BARRIER

- Height: 610mm.
- Individual barrier length up to 2500mm.
- Longer barrier runs will have posts located at every 1600mm.
- Standard finish: Galvanised.



REP 103 – TUBULAR RACK END BARRIER

- Height: 500mm or 750mm.
- Individual barrier length up to 2500mm.
- Maximum length with centre post is 4000mm.



REP 104 – LOW LEVEL CHANNEL BARRIER

- Height: 450mm or 750mm.
- Individual barrier length up to 2500mm.
- Longer barrier runs will have posts located at every 1900mm .

