



safe·x

MATERIAL HANDLING PRODUCT GUIDE

BOLLARDS

GUARDRAILS

**CRASH
BARRIERS**

PEDESTRIAN

RACKING

COLUMNS

SIGNS

Safe-X - It's so easy

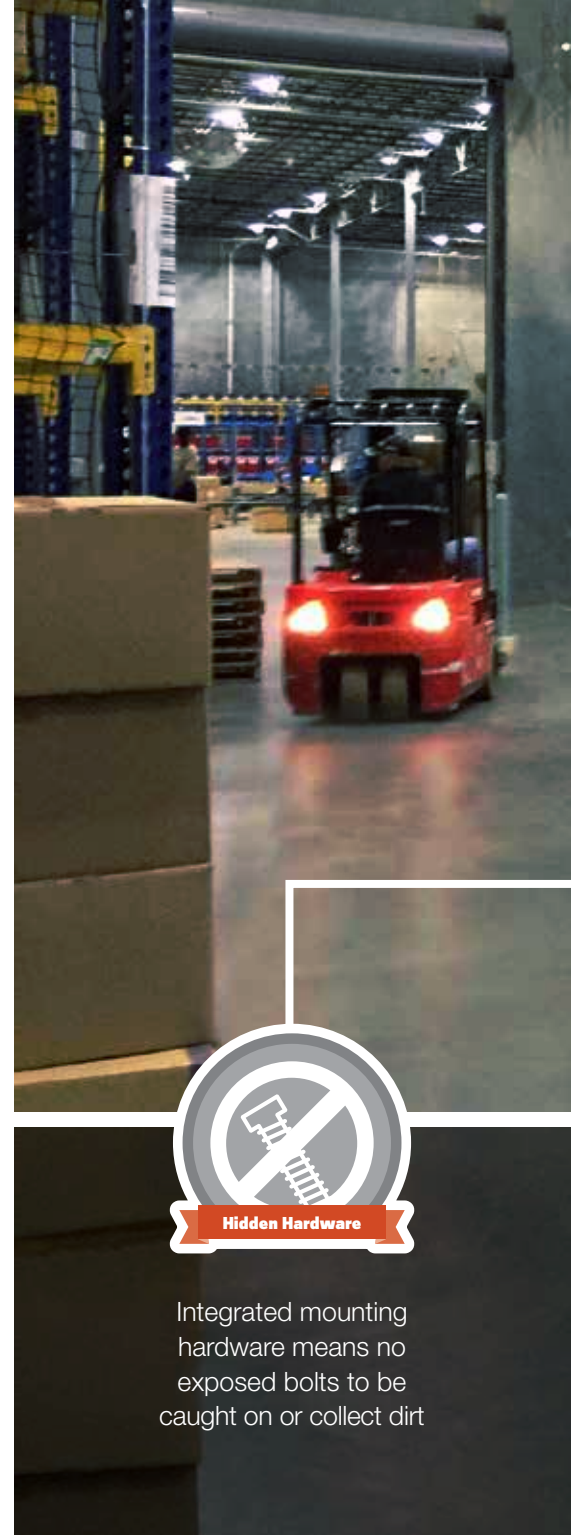
A New Way to Look at Damage Prevention

How often has this happened to you? Your steel bollard, rail, or angle iron has halted a wayward truck, but now it's broken - and so is your concrete floor, your truck, your driver and your goods.

It really doesn't have to be this way.

What if you could replace those heavy parts with a tool kit of solutions designed to absorb impacts, deflect glancing blows and reduce your maintenance costs?

Your wait is over.



Integrated mounting hardware means no exposed bolts to be caught on or collect dirt



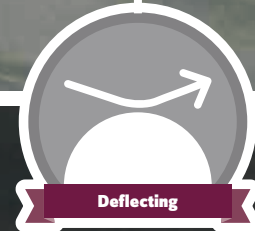
Thoroughly tested products that absorb, deflect or stand firm — our impact testing is observed and certified



Throw away your paint brush — you won't need it anymore with our products



Energy-absorbing products absorb direct impacts — just like the airbags in your car



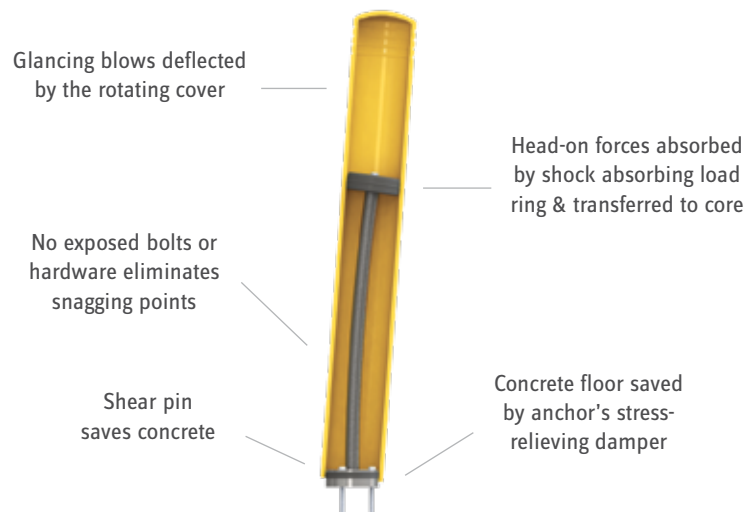
Our super strong ductile iron ends & corners are designed for deflection and are strong enough for direct impact

BOLLARD SYSTEMS:

FlexCore® Bollard

Flexible Bollard with Steel Core

Engineered for strength, the FlexCore Bollard is designed smarter than core drilled bollards and easier on your equipment. Offered in 4", 6" and 8" options to ensure you get the right amount of protection.



Deflector Post

Floor-Mounted Roller Post

Distributing impact energy by spinning and rocking, the Deflector Post protects against glancing blows – perfect for high-traffic corners.



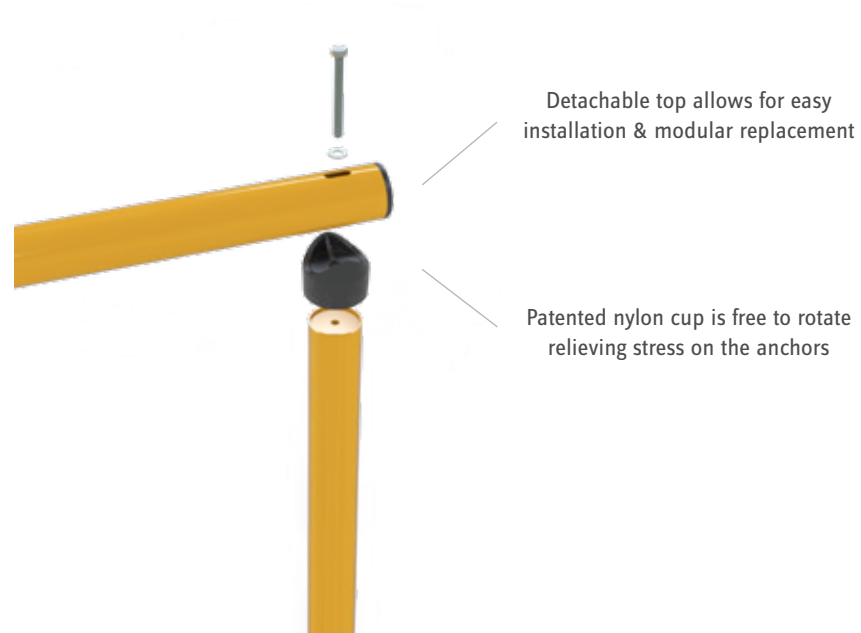
Our products are designed with no exposed hardware - install it once & get total peace of mind



Goal Posts

Door Frame Protection

We engineered our Goal Post door protection to withstand impacts from heavy equipment. The side bollards flex and spin to absorb damaging impacts, and our patented nylon fish-mouth connection installs in minutes with no welding.



Safe-X - It's so easy: **Bollards**

A flexible bollard that turns accidents into incidents



No more bent concrete-filled bollards, no more expensive repairs or replacements, no more downtime. By flexing, spinning and absorbing energy, these bollards are engineered to protect not only your facility but your concrete floors, your equipment, your business, and your people.



High replacement costs from repairing your concrete floor



Shock absorbcency gives you strength while saving your floor

BARRIERS & GUARDRAILS:

FlexCore® GuardRail

Guardrail Safety Barrier

Our easy-to-install flexible guardrail system is designed for areas that need an extra level of protection. With easy to cut polymers, this system can be adapted to your facility.

Flexible and tough, guardrails absorb impact energy

Eliminate the need for repainting

Ground-level barrier gives you complete protection



A Closer Look at GuardRail:

Impact forces are absorbed by the flexible rails, transferred to hidden aluminum pins, and dissipated by industrial shock-absorbing anchors.

Engineering grade polypropylene barrier

Pinning system provides additional flexibility and strength

Hidden impact dampening hardware eliminates catching & tripping points



FlexCore GuardRail was created with an energy absorbing design that deflects glancing blows & absorbs impacts

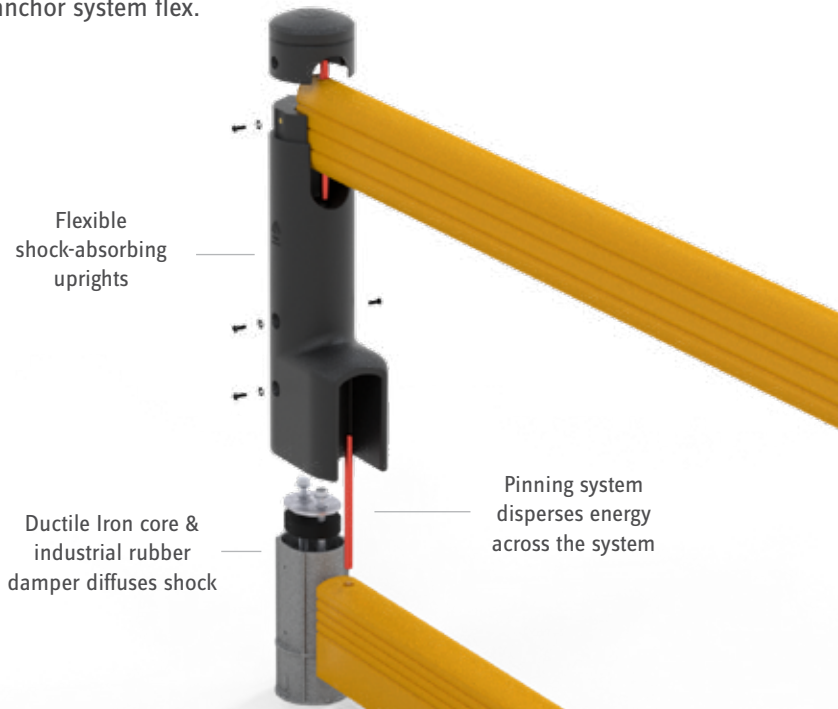


Safe-X – It's so easy: **Guardrails**

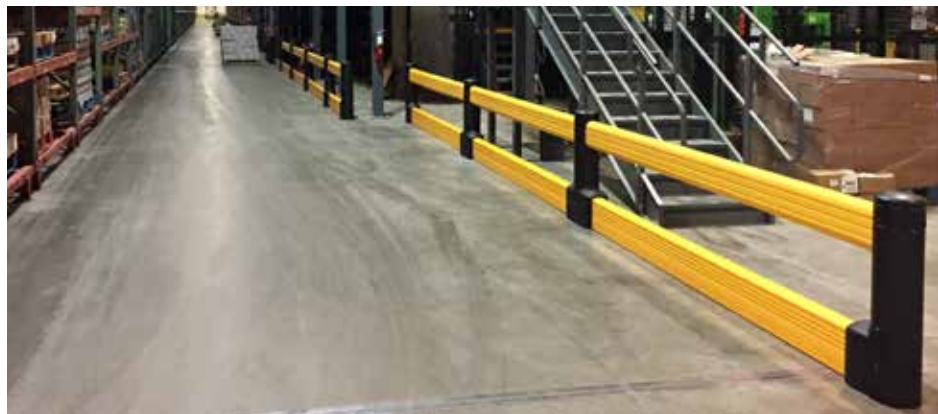
A flexible barrier that turns accidents into incidents

Impact-Absorbing Uprights

The entire system is engineered to absorb impacts, even the uprights with their ductile iron cores and impact dampening anchor system flex.



This guardrail system is engineered to protect not only your facility but your floors, equipment, and people. Rails and posts flex to absorb energy and soften impacts. It deflects and absorbs impacts to provide total damage prevention.



Rigid barriers need costly repairs after a single impact



Energy absorbing design can take a hit high or low & stand strong

CRASH BARRIER SYSTEMS:

Your tool kit for total damage protection

Building Protection



Conveyor Protection



Space Defining



Column Protection



Pedestrian Safety



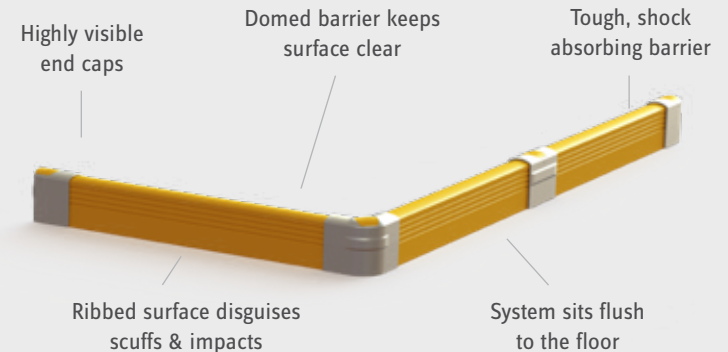
Rack Protection



Crash Barrier

Floor-Mounted Barrier System

Crash Barrier is ideal for protecting wall perimeters, creating traffic lanes, framing off areas and separating equipment from people. Impact energy is absorbed and dissipated through the barriers before reaching the floor.



Crash Barrier was created with an energy absorbing design that deflects glancing blows & absorbs impacts

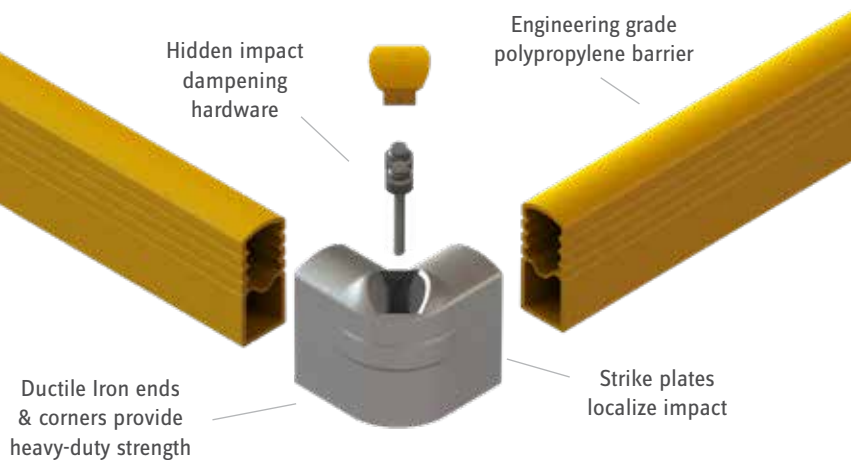


Safe-X – It's so easy: **Crash Barriers**

A barrier that absorbs impacts & deflects glancing blows

A Closer Look at Crash Barrier:

Ends, corners and connectors are all made from ductile iron – an alloy engineered for exceptional strength, impact and fatigue resistance. Paired with the polypropylene copolymer barrier, it creates a system that is both strong and flexible.



Engineered from the ground up, our Crash Barrier flexes to absorb energy and soften impacts. Combined with ductile iron ends and corners to anchor the system, it deflects and absorbs impacts – to provide total damage prevention.



Angle Iron will dent on impact and weaken the integrity of your floors



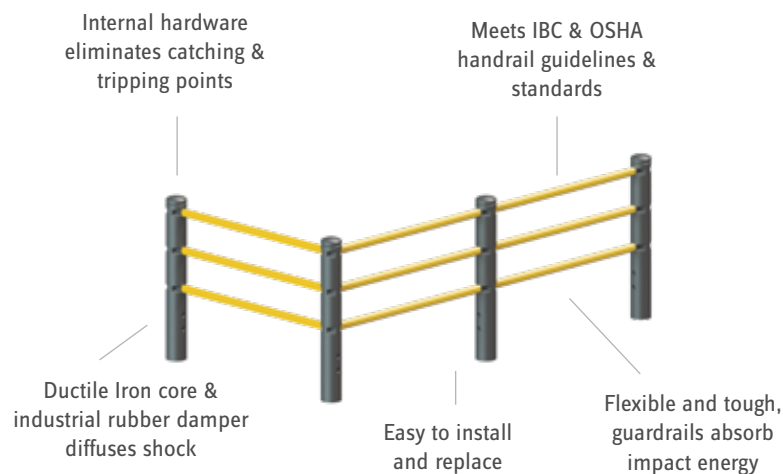
Absorbs direct impacts & deflects glancing blows

PEDESTRIAN SYSTEMS:

Pedestrian Barrier

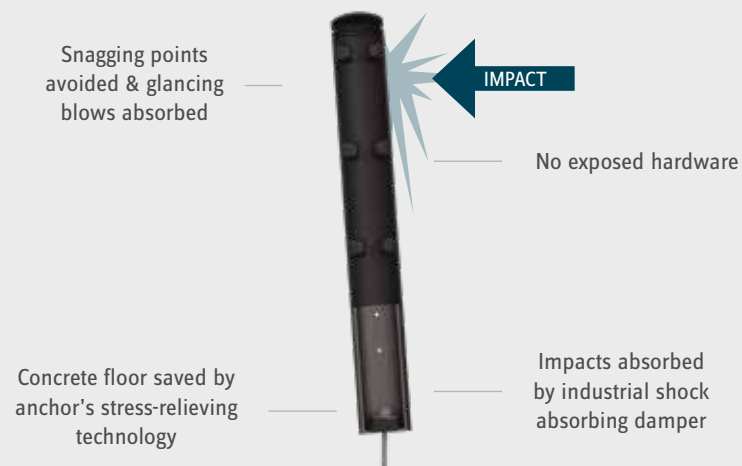
Impact Absorbing Safety Barrier

Our fully customizable barrier system keeps your people safe and your business protected. With this modular design, impacts are absorbed by the rails and uprights.



A Closer Look Inside:

Every part of our Pedestrian Barrier System is designed to work together to absorb accidental impacts and protect your people – the uprights even use cores of ductile iron which has the strength of steel with more shock absorbency.



Our products are tested with TÜV to ensure the highest level of protection



Report #441217, 439402 & 455255



Pedestrian & Crash Barrier

Modular Barrier Combinations

Our modular Pedestrian Barrier guardrail can combine with the Crash Barrier for areas of your facility that need that extra level of protection.

Gates create designated safe crossing areas in high-traffic zones

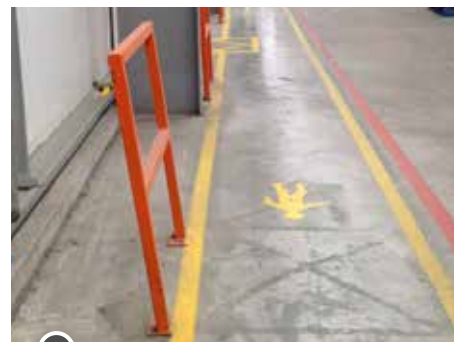
Domed surfaces eliminates dust & bacteria collecting areas

Provides protection from low forks & pallets

Crash Barrier can be added to any Pedestrian Barrier run



Our modular systems effectively separate your most important asset - your people - from dangerous equipment. The same impact-resistant technology can also be used to defend your walls and machinery, create traffic lanes and frame off areas.



Rigid handrails fail after a single impact and need repair



Energy absorbing design can take a hard hit & stand strong

RACK PROTECTION:

Rack End Protector

High Visibility Rack End Protection

With each hit, bump and scuff, our Rack End Protector diffuses the impact – stopping forklifts and pallet trucks with a calculated amount of energy absorption.

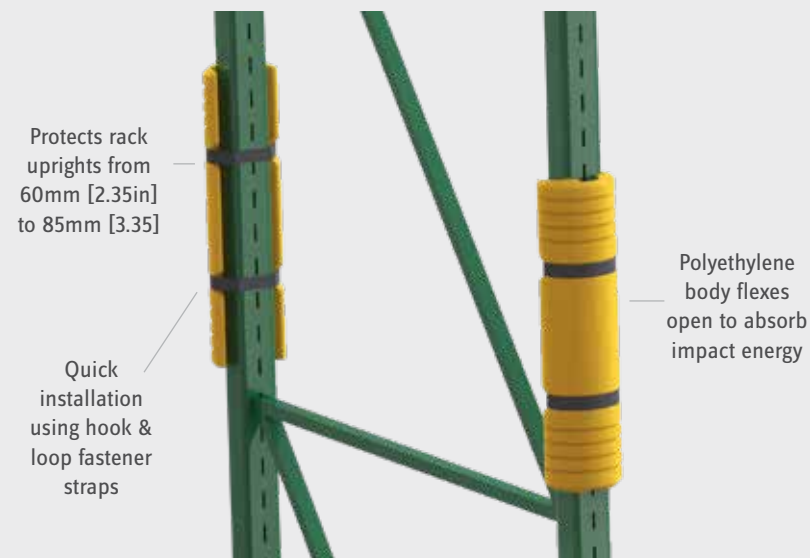


Our ductile iron ends and corners are designed for deflection and are strong enough for direct impact

**Rack Mounted Guard**

Strap-On Racking Impact Protection

The polyethylene body provides strength and durability to absorb impacts and is flexible to suit a variety of sizes. Wrap the straps around the racking leg and you're done.



Shock-Absorbing Rack Guard

Pallet Rack Upright Protection

Our heavy-duty shock-absorbing Rack Guards have been designed to protect your pallet rack columns from the damaging blows of forklifts and pallet jacks.

Industrial shock absorber

Highly visible, half-moon shape efficiently deflects impacts

Offset sides fit over rack base plates and close to uprights

Safe-X - It's so easy: Rack Protection

Heavy-duty, shock-absorbing impact protection for racking



Our impact absorbing rack protection is engineered to stand up to common bumps, impacts and collisions, to send glancing blows on their way and take the brunt of direct hits without denting or damaging your racks, equipment or facility – all while keeping your people safe.



Expensive concrete damage weakens the integrity of your floors



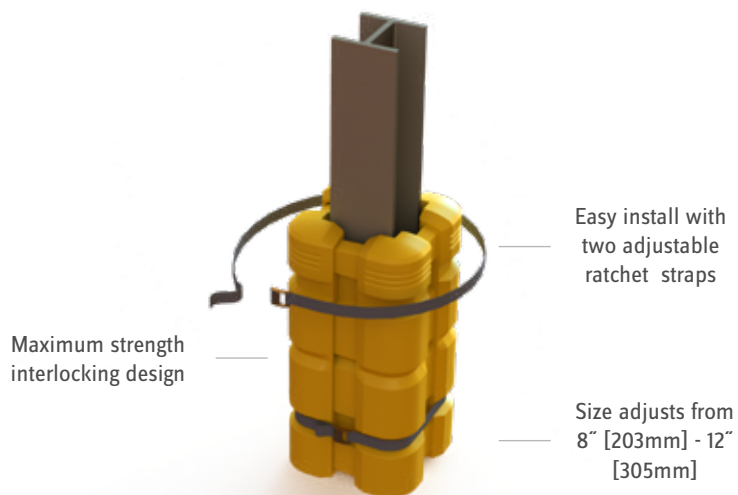
Strong protection from accidental impacts with forklifts & pallet jacks

COLUMN PROTECTION:

Column Guard

High-Strength Column Barrier

The high-strength, shock-absorbing assembly cushions columns, equipment and drivers from impacts. With an easy-to-install ratchet strap system, there's no special skills or equipment required.



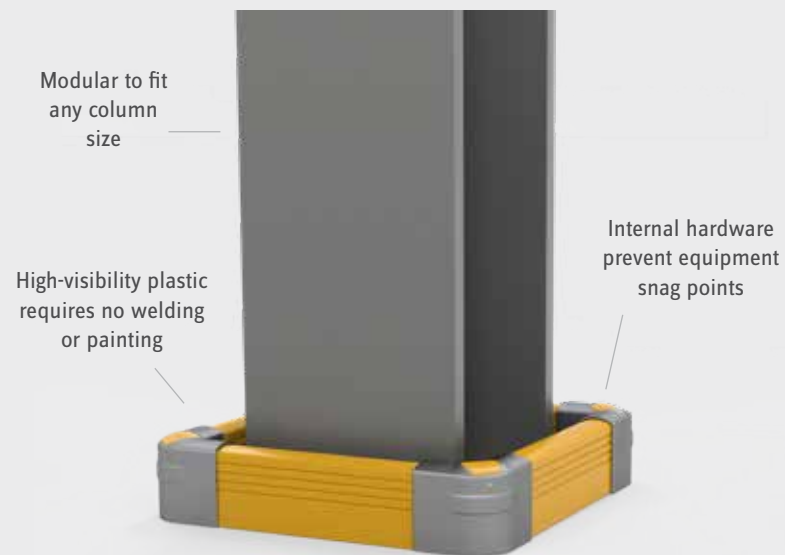
Throw away your paint brush – we have the products that look great & keep looking great



Low Level Column Guard

Floor-Mounted Barrier System

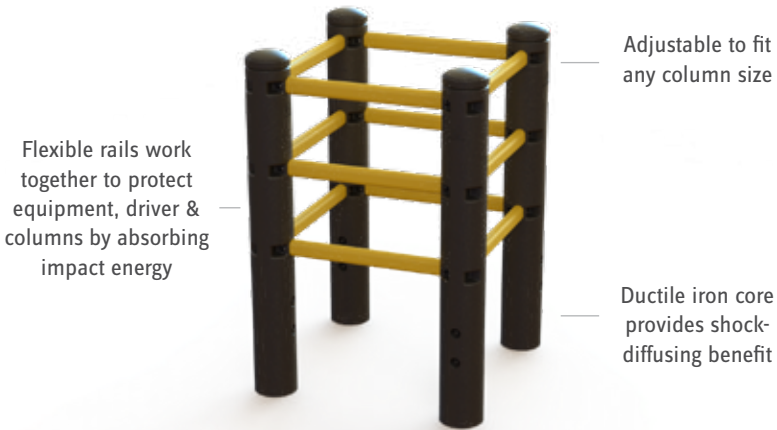
Engineered from Ductile Iron and maintenance-free polypropylene, this column protection isolates uprights from potentially disastrous collisions.



High Level Column Guard

Guardrail Column Protection

This modular design accommodates any space, regardless of size. Post and rail safety barrier system protects the entire column.



Safe-X - It's so easy: **Column Protection**

Fully customizable column protection to fit any column size



Nothing provides a protective zone around columns like our easy-to-install, high-strength adjustable column protection. The shock-absorbing assembly installs easily and cushions columns, equipment, and drivers from impacts.



Bulky solutions can't take a hard hit & straps don't stay in place



Our adjustable design protects a wide range of column sizes

SIGNAGE:

BumperSign

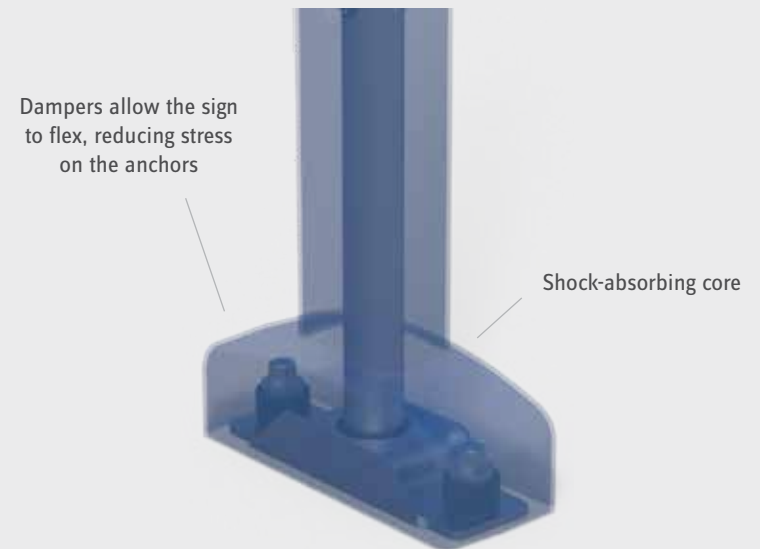
Flexible, Surface-Mounted Sign Post

This versatile sign can mark anything from accessible parking to facility warnings.



A Closer Look at BumperSign:

The impact-absorbing core, protective cover and hidden hardware deflects on impact, protecting your assets & people.

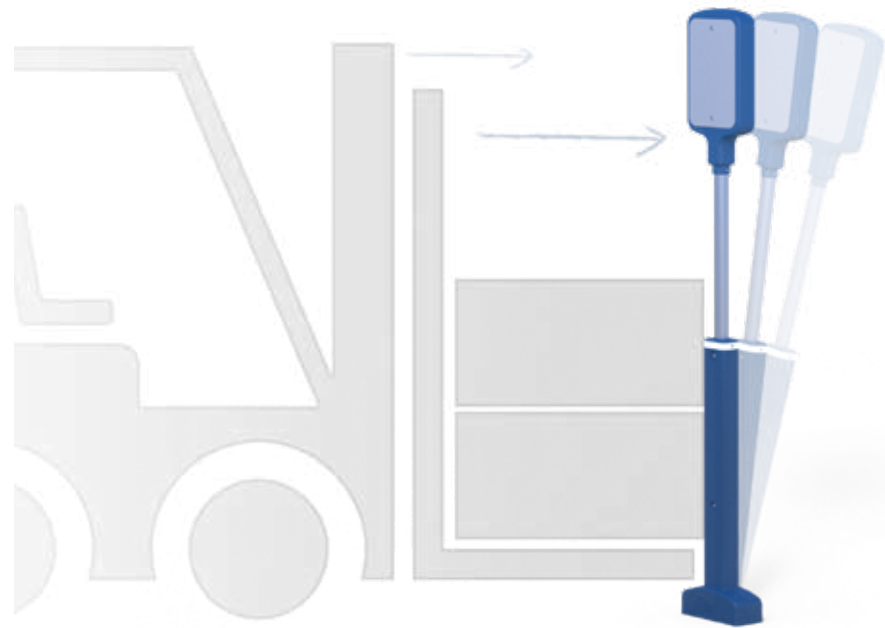


BumperSign was designed with an energy absorbing core that turns accidents into incidents



Takes An Impact & Makes An Impact

The BumperSign allows your signage to take a hit and stand its ground. Mark anything from parking to facility warnings.



Safe-X – It's so easy: **Signs**

A paint-free sign that will transform your facility



No more bent signs, no more expensive repairs or replacements, no more downtime. By flexing and absorbing energy, these signs are designed to take a hit and stand tall – ensuring your facility and employees are always protected.



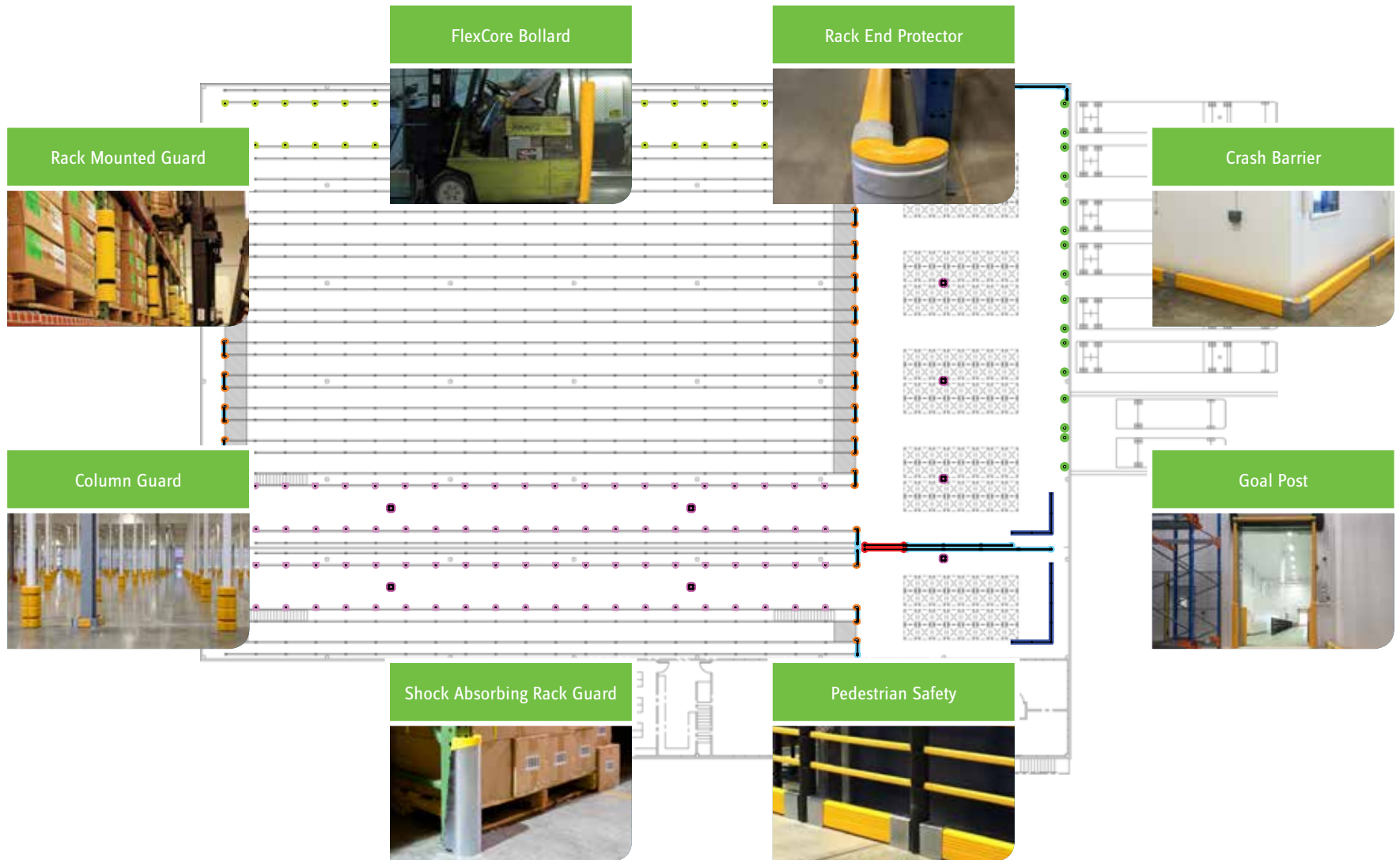
Temporary options can easily be knocked out of place



Because of its internal anchors, it can take a hit & remain in place

Solutions for every corner of your facility!

Let us work with you to develop a comprehensive safety and damage prevention plan.





Let's get things started!

Total Damage Prevention takes more than just great products. It also takes planning to ensure the right product choice, placement and installation.

Safe-X knows how to keep you safe.

www.safexonline.com

safe·X



Safety doesn't have to be complicated. It's all about choosing the right products for the job. Safe-X offers you a wide range of safety products for industry, warehouse and construction work. Essential products that doesn't take time and effort to find and order. Or as we like to put it – It's so easy!

safe-X
WWW.SAFEXONLINE.COM

Safe-X Enterprise AB · Box 1 · Kävsjövägen 17 · 335 04 Hillerstorp, Sweden · Tel +46 (0)370-37 34 60

www.safexonline.com