

LOCKER SOLUTIONS FOR EDUCATION



**Anti-bacterial protection on
all steel lockers**

**Full Design and Installation
Service available**



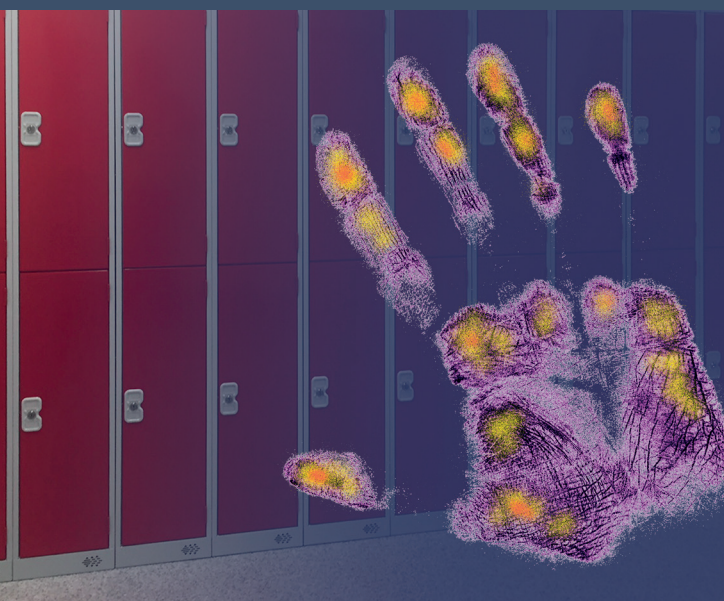
LINEAR STORAGE SOLUTIONS

0800 917 1103

sales@linearstorage.co.uk

www.linearstoragesolutions.com

Help in reducing the risk of cross-contamination



In these unprecedented times keeping the learning environment safe and hygienic is a major concern.

The addition of ActiveCoat antimicrobial technology into the paint finish of our lockers, cloakroom equipment and cupboards can help compliment your existing hygiene protocols.



ActiveCoat is a hard wearing, patent-protected powder coating, containing elemental Silver. This impedes the growth and migration of potentially harmful bacteria, mould, fungi and algae, reducing the risk of cross-contamination from surface to surface. This is especially suitable where stringent hygiene standards are required, such as schools, academies and universities.

ActiveCoat has been tested by an Internationally recognised microbiological testing laboratory for antibacterial performance, against the most widely encountered and problematic organisms, including the MRSA Super bug and E-coli. These micro-organisms suffered a 99.9% reduction in population.

Unlike anti-bacterial sprays and chemical disinfectant which rely on repeated use, ActiveCoat contains anti-bacterial agents, uniformly distributed throughout the coating. This ensures antimicrobial efficiency continues for the life of the coating.



With recent research showing that school children carry 15-20% of their body weight around school each day in their backpacks maybe this year's summer break is the ideal time to provide your students with central, secure and durable storage.

We work with Primary and Secondary Schools, Colleges, Universities and Nursery's across the country to provide locker solutions. Lockers are proven to help reduce clutter and fire hazards, improve the aesthetics of the school and provide much needed storage for students.

We aim to provide functional, space maximising storage which is designed to improve storage efficiencies, access capabilities and the overall aesthetics and usability of the environment. Our Locker ranges includes standard steel, steel with laminate doors, aluminium with laminate doors and plastic lockers to meet all educational personal storage requirements.

Design and Installation Service

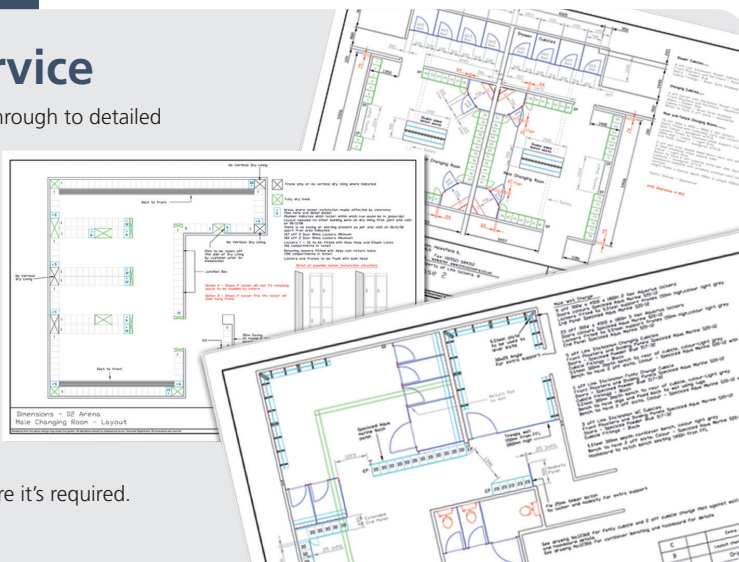
We are here to help you from the initial briefing and site survey, through to detailed design proposals, installation and the final commissioning.

Your project is managed flexibly and sympathetically, and you're always part of the process. This is space which must work for you, not the other way round.

Correct installation is as important as correct product specification. In order to ensure your changing room or locker facility has the best start in life, our experienced installation teams are available to complete any required work.

Our specialist fitters have the knowledge and expertise to complete installation work efficiently and with the minimum of disruption. We ensure installations are completed within agreed time frames to meet commissioning deadlines.

The result? You get the storage you need, when you need it, where it's required.



Standard Steel Lockers

Versatile, hard-wearing and reliable, our lockers provide quality, choice and security as standard. But don't just take our word for it – our lockers meet the testing requirements of the British Standard for Clothes Lockers BS 4680: 1996.

Our steel lockers grow with pupils and students as they proceed through their education. It is important that the lockers specified have compartments within the height range of the user age group.

Cube, Quarto lockers, which can be stacked, and half height lockers are ideal for key stage 1, three-quarter height lockers for key stage 2 and full height locker for key stage 3 and higher education.

Wide range of sizes and colours available with a choice of lock fittings.

Sloping tops are also available to prevent items and litter being left on locker tops and can be combined with locker stands to make cleaning easier.



Cube lockers



Quarto lockers



Half height lockers



Three-quarter height lockers



Full height lockers

Laminate Door Lockers

If you're looking for a personal storage solution with a touch of elegance, then our range of laminate lockers is ideal. These stylish lockers are of the highest quality in terms of security, but they also add to the aesthetics of any environment.

Combines the versatility of steel lockers, with the durability of solid grade laminate doors.

Solid grade laminate material offers a robust, elegant solution with a range of colours to satisfy all requirements.

Choice of plant-on doors which cover the front face of the locker body, creating a wall of colour, or inset doors which provide a visual contrast between the door finish and the locker frame.



BENEFIT FROM SECURE STORAGE SOLUTIONS

Aluminium Wet Area Lockers



The perfect choice for demanding environments such as school swimming pools and gyms.

The aluminium body and solid laminate door of these lockers are designed to withstand humid conditions whilst delivering a high quality aesthetic finish.

The doors are available in a wide range of laminate colours and finishes, feature extra-heavy self-closing hinges and will not deteriorate with prolonged use. The doors fit flush and cover the front face of the locker body, creating a wall of colour.

Plastic Lockers

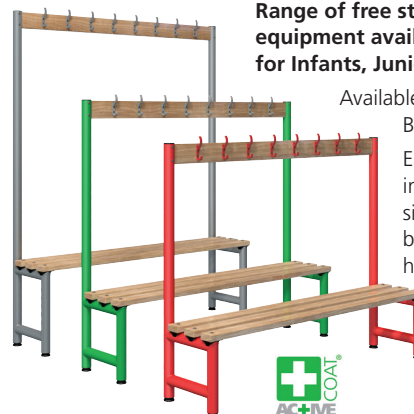
A robust and rust-proof polyethylene locker that is highly vandal resistant and ideal for wet area changing rooms and outdoor storage.

Schools will often use the half size locker option and place a colourful wall of lockers on outdoor corridors. Bags and books are quickly retrieved by pupils as they move to different classrooms.

Plastic Lockers are also found in swimming pool areas where rust-resistance is a key requirement.



Seating & Benches



Range of free standing cloakroom equipment available in 3 seat heights for Infants, Juniors and Seniors.

Available with either Light Ash or Black Polymer slats.

Easy to install, the range includes single and double sided benches, hook benches and overhead hanging benches.

Choice of frame colours all with ActiveCoat anti-bacterial protection.



Laptop Charging Lockers

These purpose-designed locker units provide a safe sanctuary for charging laptops and real peace of mind for users.

Lockers are fully portable as a single unit - simply place the unit in a convenient location, plug the unit into a power point and the lockers are ready to use.

Anti-bacterial paint finish to minimise the general spread of germs in communal areas.



Cupboards & Cabinets

Our range of cupboards offer secure storage throughout school premises.



From stationery cupboards in offices through to janitorial cupboards for cleaning staff and hazardous storage cupboards for science CTC rooms.



LINEAR STORAGE SOLUTIONS

Linear Storage Solutions Ltd

The Annexe 30 Christchurch Road, Bournemouth, Dorset BH1 3PD

0800 917 1103

sales@linearstorage.co.uk

www.linearstoragesolutions.com